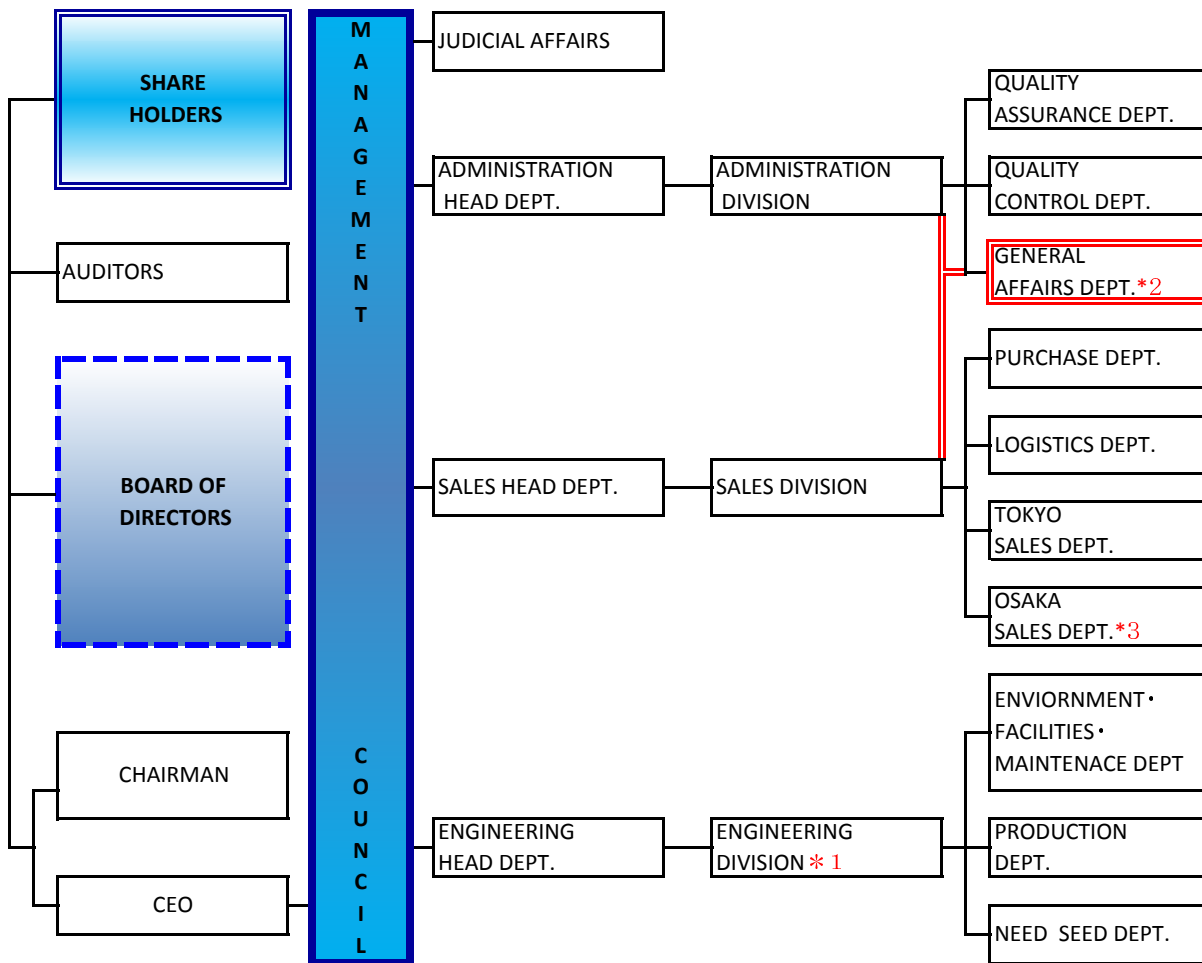


## SHOWA KAKO CORPORATION ORGANIZATION CHART

1-Apr-13



\* 1 ENGINEERING DEPT.

\* 2 GENERAL AFFAIRS DEPT.

\* 3 President Special Appointive

Safety and Sanitation is also manage by engeneering dept.

Periodical factory inspection is performed once a month with officer, Board of directors, adviser, and the member selected by the company.

General affairs dept., manage both sales as well as adminstration dept.

In Osaka Sales Department there is present Special appointive.